

# *Shifting from*

Garland, TX

*Zero Tolerance to*

*Equitable  
Discipline*

# Welcome



**Meet the Press**

**Babetta Hemphill, Jennifer Miley,  
Thomas Van Soelen**

# Microlabs

01

Define what “discipline equity” would look like in your work context.

02

What might you believe are the top two factors which contribute to the gap between your current situation and the discipline equity. Why those?



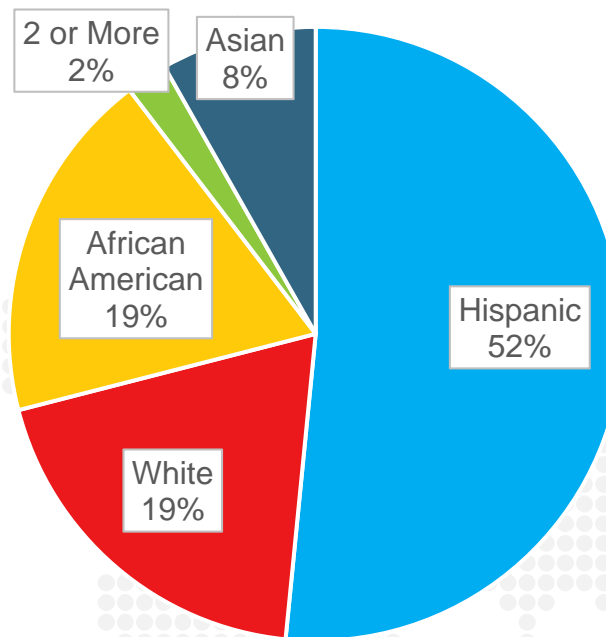
03

If you could only take one action, and the action would really and truly make a difference in bridging the gap, what would you do? Why?

● LIVE

## Community Information

- Large working class community
- Approximately 57,000 students
- Over 110 Languages spoken
- Desegregation order
- Choice of School Plan



District Demographic Information

# AP Multi-Level Meetings

01

Connecting Own Identity to Our Work Using the Paseo Protocol

---

02

Profiles of a Student and Learning the Consequences of Zero Tolerance Policies

---

03

Analysis of School-Level Plans using Making Meaning Protocol

---

04

Peeling the Onion Protocol

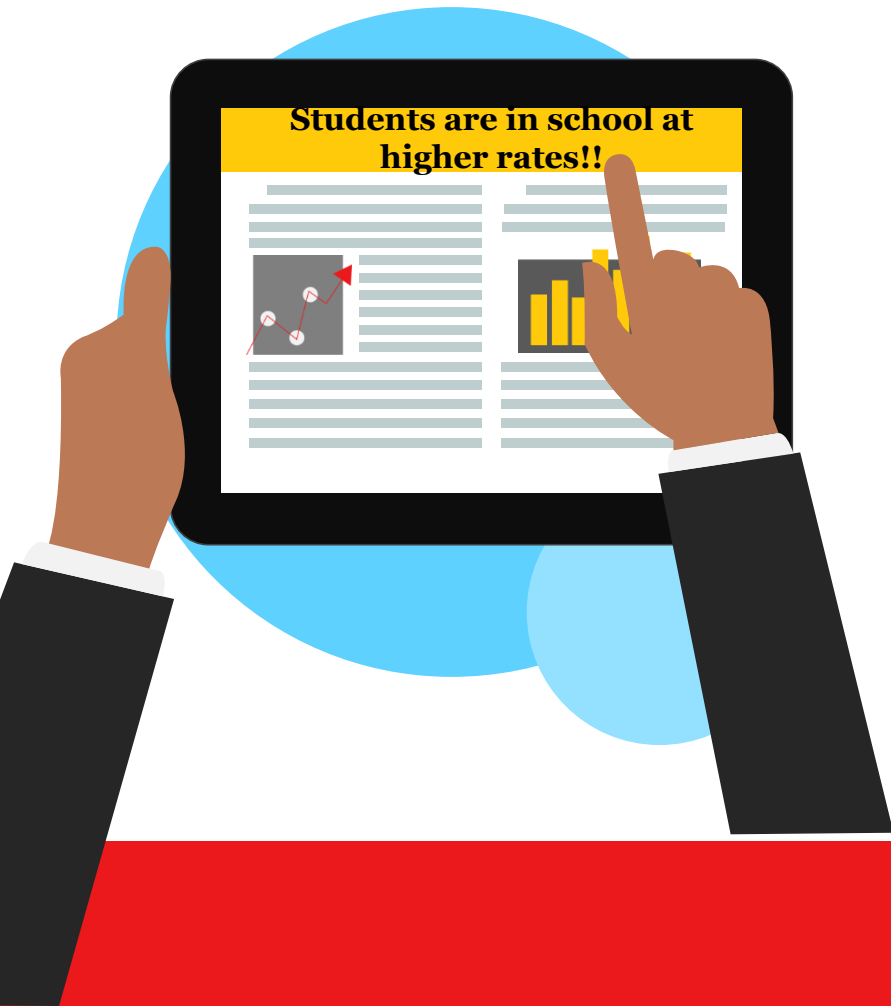
---

05

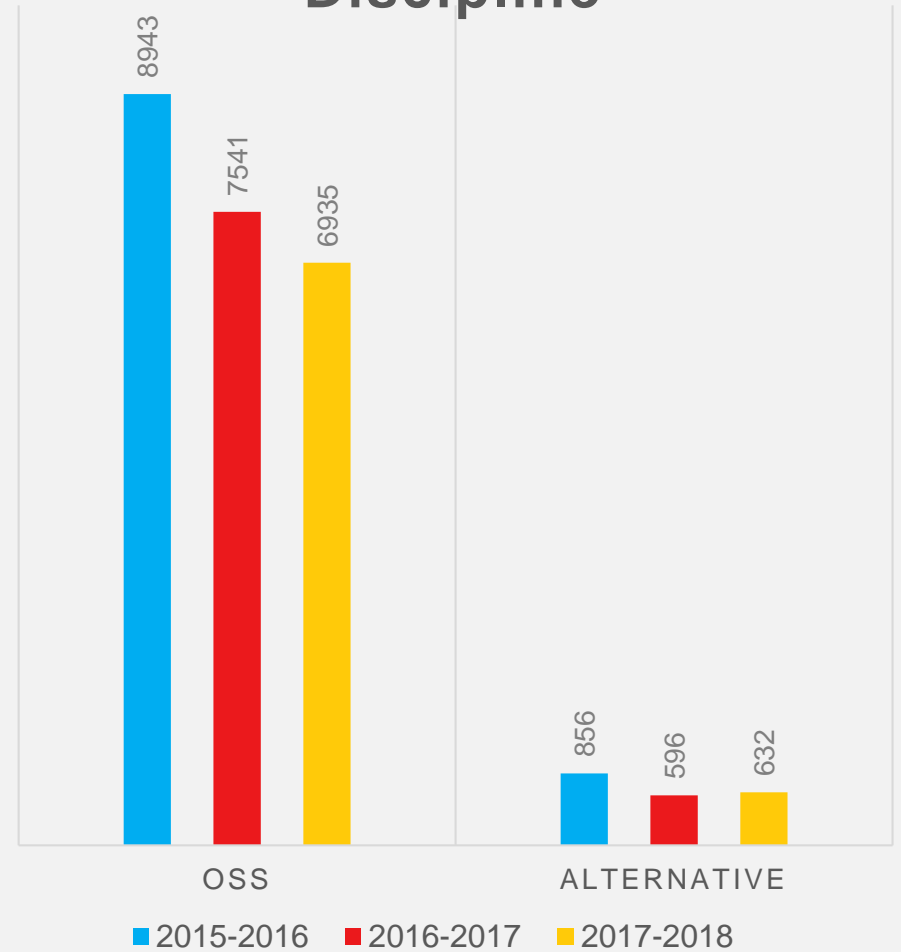
Wagon Wheel Brainstorming of Interventions and Deep Root Cause Analysis



# Data Review



## # of Events: Exclusionary Discipline



# Paseo



# Artifacts



Resources

Agendas

Video  
Clips



# For more...

**Babetta Hemphill**  
[BEHemphi@garlandisd.net](mailto:BEHemphi@garlandisd.net)

**Jennifer Miley**  
[JRMiley@garlandisd.net](mailto:JRMiley@garlandisd.net)

**Thomas Van Soelen**  
[thomas@vansoelenassociates.com](mailto:thomas@vansoelenassociates.com)



**Meet the Press**

# Post-Session Evaluation

Take our 3 minute survey!

Your feedback will be used to:

- Understand the impact of our session
- Improve our facilitation

[bit.ly/2018SessionFeedback](https://bit.ly/2018SessionFeedback)

Session ID: 2408

Session Feedback

See Rubrics

SHOW ME: SESSION REACTIONS, SESSION LEARNING, OVERALL FEEDBACK



AVERAGES PERCENTAGES 0

GROUP BY: STATE DURING: 10/23/2018 - 10/23/2018

	ALL	MO	TX	AB	CA	NY	FL
DATA COUNT	8	2	1	1	1	2	1
Session Learning	1.8	1.0	1.0	1.0	2.0	2.5	3.0
This session had an appropriate balance of research, theory, and practical application in the areas we covered.	1.8	1.0	1.0	1.0	2.0	2.5	3.0
Session Reactions	2.3	1.8	2.0	3.5	2.5	2.3	2.5
The facilitator(s) aligned the content and concepts in this session to the Standards for Professional Learning.	2.0	1.0	1.0	4.0	3.0	2.0	2.0
This learning experience was highly engaging.	2.6	2.5	3.0	3.0	2.0	2.5	3.0
Overall Feedback	3.5	3.0	3.0	3.0	4.0	4.0	4.0

Made with Gifox

**NOTE: Session ID should be in all CAPS and is case-sensitive.**

 Your responses power our  report